



INTELLINET
NETWORK SOLUTIONS

BRINGING NETWORKS TO LIFE



Remote Power Manager

Model
156127

Monitor, Control and Reboot Power – from Anywhere!

The INTELLINET NETWORK SOLUTIONS™ Remote Power Manager is an Internet-ready device designed to allow network administrators remote and individual control of AC power for up to eight devices. Intelligent remote power management of rack-level hardware (servers, routers, modems and telephone networks) allows you to control critical power with the security of knowing your investment is protected. With the Remote Power Manager, you can be alerted via email messages, SMS pager messages and SNMP traps to respond to problems immediately to minimize or eliminate downtime.

Remote Power Recycling – Reboot from Anywhere!

Monitor, control and reboot servers and other connected devices remotely using standard protocols such as single dial-up, SNMP, Telnet and the Web. So even if the network locks up, there is always a backup control option for administrators.

Power Monitoring

The Remote Power Manager keeps you aware of any AC power disruption to the devices that are attached by automatically notifying you through SNMP alerts or email. Detailed data-logging is captured for statistical analysis and diagnostics, and is available in a daily history report through email.

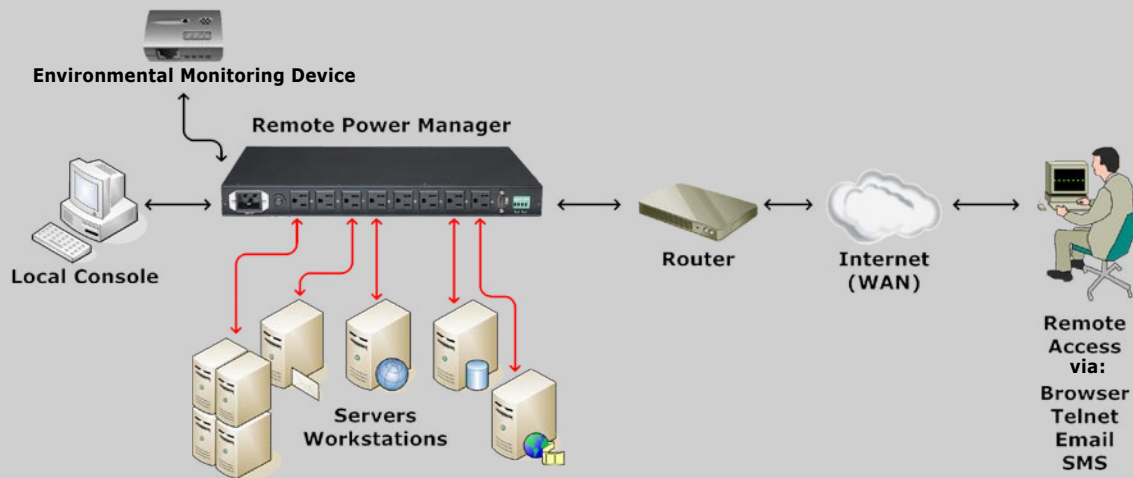
Remote Temperature and Humidity Sensing

The intelligent Remote Power Manager includes optional ambient temperature-sensing capability. When equipped with the optional Environmental Monitoring Device (EMD), it can monitor and report an over-temperature condition, reducing the risk of equipment damage.

Lifetime Warranty

Strict manufacturing standards ensure the highest quality in all INTELLINET NETWORK SOLUTIONS products. All items carry a full Lifetime Warranty – the strongest quality commitment anyone can make.





LIFETIME WARRANTY

Model 156127

Features

- Turns any AC-powered device on or off remotely via a Web browser, NMS, Telnet, SNMP or HyperTerminal (console)
- Controls the power of up to 8 connected devices
- Safeguards equipment from power surges, lightning strikes and other power anomalies
- Intelligently turns devices on/off based on event occurrence or planned schedule
- Administrator and multiple users with password protection for double-layer security
- Address-specific IP security masks prevent unauthorized sources from accessing the RPM menu through the network
- Supports SSL V3 and SSH V1 protocols
- Detailed data-logging for statistical analysis and diagnostics
- Event notification through SNMP traps or email alerts
- Daily history report via email
- Downloads data and events log list to servers
- Can be attached to an optional Environmental Monitoring Device (EMD), Model 502948
- Lifetime Warranty

Features for optional Environmental Monitoring Device, Model 502948

- Provides monitoring of your computer-room environment
- Configurable through Remote Power Manager Web interface
- Integrated temperature and humidity sensor
- 2 additional connectors (open/close) for motion detectors, smoke detectors, and other sensors and alarms
- Programmable alert state ("normal open" or "normal close")

Specifications

GENERAL

- CPU: 16-bit 100 MHz processor
- Flash ROM: 2 Mbytes
- SDRAM: 2 Mbytes
- Network interface: 1 x RJ-45, 10/100 Mbps Ethernet
- Console interface: 1 x RJ-45, RS-232 level
- Certifications: FCC Class B, CE Mark

SECURITY

- Address-specific IP security masks prevent unauthorized access
- Secure Socket Layer (SSL V3) 128-bit encryption
- Secure Share (SSH V1) 3DES encryption

AC POWER INPUT/OUTPUT, 110 V MODEL

- Input socket: 1 channel IEC C20
- Input voltage: 100 to 125 V AC, 50/60 Hz
- Input power rating: 15 Amps
- Output socket: 8 channels NEMA 5-15R
- Output voltage: 100 to 125 V AC, 50 to 60 Hz
- Load: 15 Amps each outlet or 15 Amps total

AC POWER INPUT/OUTPUT, 220 V MODEL

- Input socket: 1 channel IEC C20
- Input voltage: 200 to 250 V AC, 50/60 Hz
- Input power rating: 10 Amps
- Output socket: 8 channels IEC C13
- Output voltage: 200 to 250 V AC, 50 to 60 Hz
- Load: 10 Amps each outlet or 15 Amps total

BUTTONS

- 8 remote control buttons
- 1 reset button

STATUS INDICATORS

- Remote control indicator: 1 red x 8
- Outlet power indicator: 1 green x 8
- Current meter: 6 orange x 9

SUPPORTED WEB BROWSERS

- IE 5.0 and above
- Netscape 6.2 and above
- Opera 6 and above
- Mozilla 1.5 and above
- FireFox 1.0 and above

NETWORK PROTOCOLS

- TCP/IP, UDP/IP, SNMP V1, SNMP, DNS, DHCP, SMTP, HTTP, Telnet, TFTP, SSL V3, SSH V1

ENVIRONMENTAL

- Dimensions:
 - 1U rackmount
 - 436 (W) x 270 (D) x 44 (H) mm (17 x 10.6 x 1.7 in.)
- Operating temperature: 0 to 40°C (32 to 104°F)
- Operating humidity: 10% to 80% non-condensing
- Weight: 3.8 kg (8.4 lbs.)

PACKAGE CONTENTS

- Remote Power Manager
- 2 rackmount ears
- 1 AC power cord
- 8 RJ-11 to RS-232 NT server cables
- Utility CD (software & documentation)
- User manual

For more information on INTELLINET NETWORK SOLUTIONS products, consult your local dealer or visit www.intellinet-network.com.


INTELLINET
 NETWORK SOLUTIONS
 BRINGING NETWORKS TO LIFE

Copyright © INTELLINET NETWORK SOLUTIONS

All names of products or services mentioned herein are trademarks or registered trademarks of their respective owners. Distribution and reproduction of this document, and use and disclosure of the contents herein, are prohibited unless specifically authorized.

INT-156127-DS-0806-01